

LED VIDEO CURTAIN (PC standard)



LUV-LVC203 (P9) PC

USER'S MANUAL

THANK-YOU

First of all, we thank you for having chosen our products.

The LED VIDEO Curtain is a great and reliable device that can meet most of your requirements for entertainment markets. It can be just plug-and-play, and also can be controlled via standard DMX512 for sophisticated requirements.

All of our products are made on our business philosophy:

- we believe that satisfied customers are the key to a successful business and that controlled growth is the only path to sustained profitability.
- We believe that there is no point in supplying products that are substandard or inadequate. In the long run, it never pays.

You can always rely on us.

Thanks again !

CATALOG

| | |
|---------------------|----|
| Thank you | 2 |
| Catalog | 3 |
| Warning | 4 |
| Safety instructions | 4 |
| Rigging | 5 |
| Description | 6 |
| Installation | 6 |
| Controller function | 6 |
| Software window | 7 |
| PC controller | 8 |
| Power box | 8 |
| Operation | 9 |
| Maintenance | 9 |
| Specifications | 10 |
| Contact | 10 |

WARNING

Safety Instructions:

This product guide contains important information about the safe installation and use of this device. Please read and follow these instructions carefully and keep this manual in a safe place for future reference.

When unpacking and before disposing of the carton, check there is no transportation damage before using the device. Should there be any damage caused by transportation, consult your dealer and do not use the device.

The device is for indoor use only. Use only in dry locations. Keep this device away from rain and moisture, excessive heat, humidity and dust. Do not allow contact with water or any other liquids. The device is not designed or intended to be mounted directly on to inflammable surfaces.

The device is only intended for installation, operation and maintenance by qualified personnel.
The device must be installed in a location with adequate ventilation, at least 50cm from adjacent wall surfaces.

Be sure that no ventilation slots are blocked.
Do not attempt to dismantle and/or modify the device in any way.
Electrical connection must only be carried out by qualified personnel.

Before installation, ensure that the voltage and frequency of power supply match the power requirements of the device.

It is essential that each device is correctly earthed and that electrical installation conforms to all relevant standards.

Do not connect this device to any other types of dimmer apparatus.
Make sure that the power-cord is never crimped or damaged by sharp edges. Never let the power-cord come into contact with other cables. Only handle the power-cord by the plug.
Never pull out the plug by tugging the power-cord.

The device should always be installed with a secondary safety fixing. A safety cord is supplied for this; it should be attached as shown in "installing the device" section.

There is no user serviceable parts inside the device do not open the housing and never operate the device with the covers removed.

This device is not designed for permanent operation. Consistent operation breaks will ensure that the device will serve you for a long time without defects.

Prevent this product from strong vibration or impact. Don't use it in shaking conditions.

The maximum ambient temperature $t_a = 45^{\circ}\text{C}$ must never exceeded.
The relative humidity must not exceed 50% with an ambient temperature of 45°C .

If this device is operated in any other way other than the one said in this manual, this device may suffer damages and thus the warranty becomes void.

Always disconnect from the mains, when the device is not in use or before cleaning it or before attempting any maintenance work.

If you have any questions, don't hesitate to consult your dealer.

IMPORTANT:

Every unit is tested completely and packed properly by the supplier. Please make sure the packing and / or the unit is in good condition before installation and use. Should there be any damage caused by transportation, consult your dealer and do not use the unit. Any damage caused by improper use will not be assumed by the supplier and / or dealer.

The supplier will not accept liability for any resulting damages caused by the non-observance of this manual or any unauthorized modification to the device.

CAUTION! EYEDAMAGES!
 Avoid looking directly into the light source,
 Meant especially for epileptics!

PLEASE recycle the shipping carton whenever possible.

Rigging

Concerning rigging, trussing for this device, please follow the European and national guidelines.

Only the qualified technicians are allowed for the device installation,

The device must never be mounted for a possible swinging position, and a safety cord attached must always be used.

IMPORTANT:

Improper installation can lead to serious damage to people and property.

This device is not supplied with a plug, and it has an open power cable. So when connecting the device to the mains with a power plug, ensure that the right color cable is connected to the right place. The following table is for your reference.

| International | EU Cable | The U.K. Cable | US Cable | Pin |
|---------------|--------------|----------------|---------------|-------|
| L | Brown | Red | Yellow/Copper | Fase |
| N | Blue | Black | Silver | Nul |
| ⊥ | Yellow/Green | Green | Green | Earth |

IMPORTANT:

Please ensure that the device is always connected to the earth properly.

Description

When you receive this product, please check if there are any problems caused by transportation. And also check if you have received all parts as follows:

1. LED Curtain 2mx3m (p9): 1 pcs
2. PC Controller: 1 pcs
- 3 .Power box:1pcs
4. power cable: 2 pcs
5. 4 pin Controller Cable: 1 pcs
6. LED Lamp: 5 pcs RGB LED lamp (spare parts)
7. This manual: 1 pcs
8. Software show video (get from the saller)

The LED PC Curtain is one of the LED PC Curtain series. All LED PC Curtains are made of high brightness LEDs, and fire retardant cloth. Its control system is designed friendly for operation. The LED PC Curtains can be produced for various ways of installation, and can be connected one to another easily and freely.

The LED PC Curtain can work to produce a lot effect: auto run program,adjust run speed. The LED PC curtain has multifunctional operation modes to meet various requirements.

Each mode can be operated by setting switch, meanwhile, you can also adjust effect speeds by setting switch.

Installation

- 1、 Please make sure the voltage matches with this product.
- 2、 The installation can be carried out by qualified technicians only.
- 3、 Please make sure there isn't any flammable material at the range of 0.5M when installing. Keep the space between the curtain and the wall 15CM minimum.
- 4、 Please avoid strong wind and ventilation in the operation area.

Controller Function

1 .Using a PC controller, make sure that the PC controller on the USB cable and docking with the computer USB port is good, and make sure the computer has successfully installed the lower right corner shows the USB drive (USB TO RS485 driver).

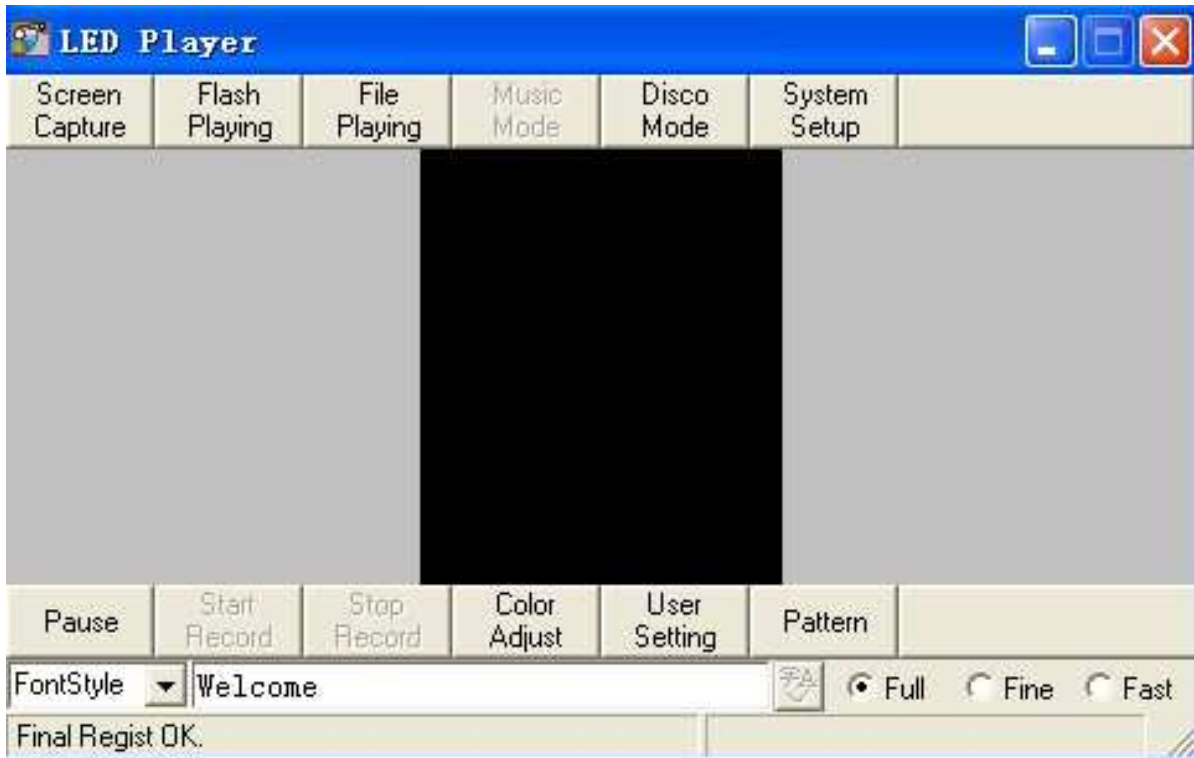
If the controller is started supporting software on the computer display the following prompt, indicating that USB is not connected at this time may not be connected to a computer controller or the USB cable is not connected (due to older computer systems can not install their own USB

tO RS485 driver), this time on the computer system can be installed to the person familiar with

the company's consulting or sales staff to consult.



Software Window



PC CONTROLLER

PC Controller



From left to the right, the follow is:

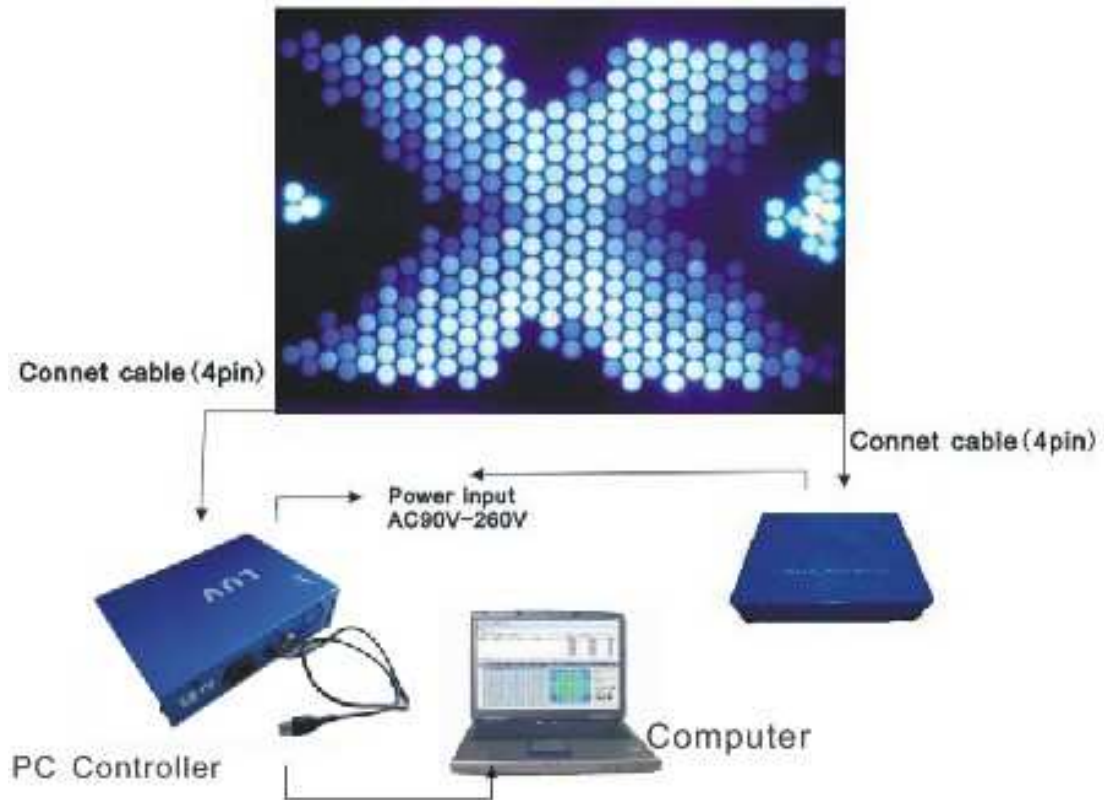
- 1.Power input (with 5A Fuse)
2. USB connection cable
3. Led curtain connection

Power Box



From left to right is the power input (with 5A fuse) and power output (double hearts Air Wing)
Power supply box contains the input AC90V-260V 50Hz/60Hz output voltage to 5V full-switching power supply
Each box can supply power for 750pcs leds (P9), 350pcs leds (P20).

Operation



Maintenance

The LED PC Curtain is almost free of maintenance. If some of LEDs become dead, you just need to replace the dead ones with the spare LEDs attached in the package.

To replace the LEDs, first of all, unplug the device from the power supply. Unzip the cloth and find the dead LEDs. Hold the dead LED, and remove the clip from front side of the cloth. Change the LED, and put back the clip. Zip the curtain, and connect the device to the power supply.

To ensure the reliability of the LED PC curtain, it should be kept clean. Keep it away from oil and other stains.

Specifications

Working Voltage: AC 110V/240V, 50Hz

Size:2mx3m

Lamp: 537 pcs , ϕ 5 high power RGB LEDs,

PC Single controller package size: 32*20.5*6cm

NOTE: Due to improvement, the product specifications and this manual are subject to change without prior notice.